



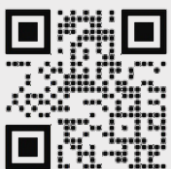
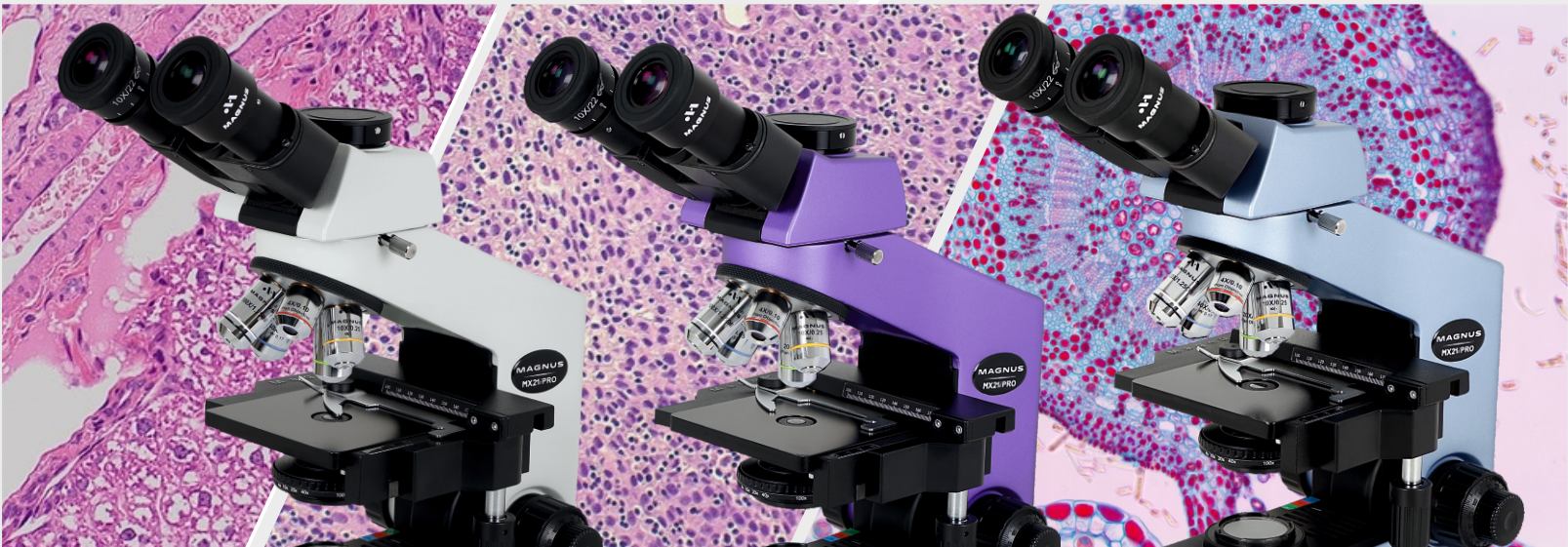
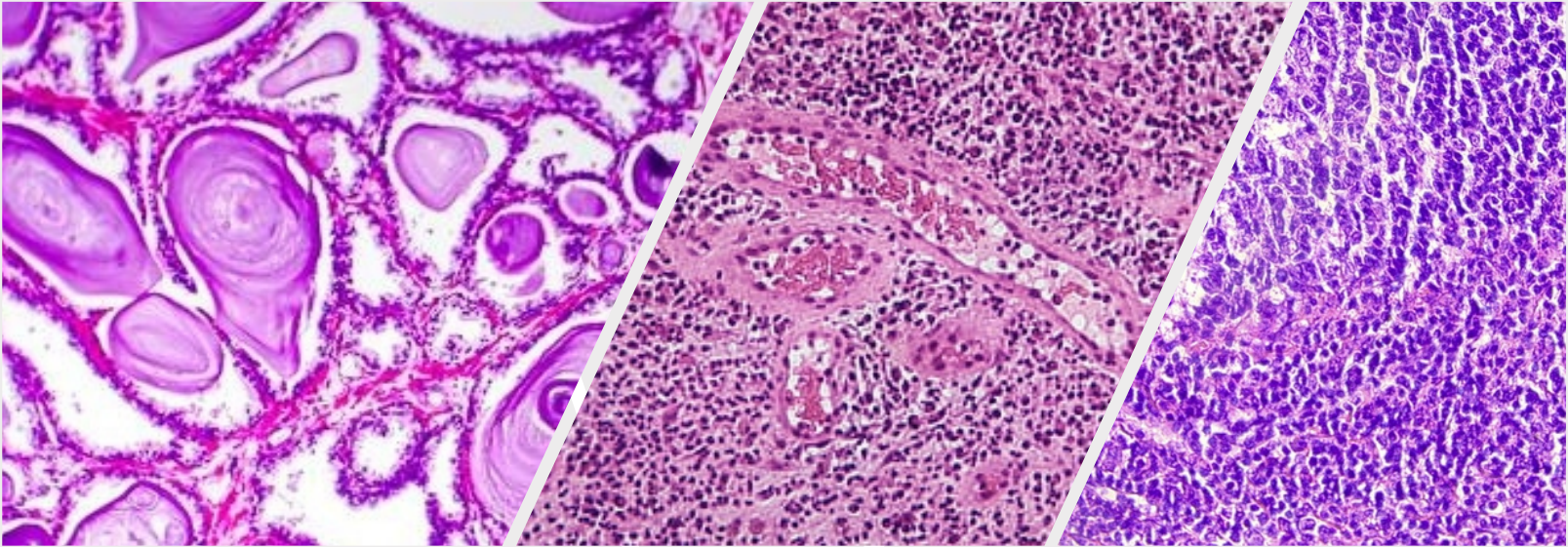
**MAGNUS**

Clinical Research Microscope

**MX21iPRO**

Microscope Masterclass

Where Vision Meets Precision: Your Clinical Microscope Solution



**UIS2**  
World-leading optics



# User-Friendly Design and Outstanding Optical Performance



Plan Achromat objectives of 4x, 10x, 20x, 40x (Spring), 100x (Spring, oil) as standard with quintuple revolving nosepiece



Abbe condenser for optimized contrast with marking for 4x, 10x, 20x, 40x & 100x



WH10X Eyepiece with FN 22mm with diopter adjustment



Stage side flap for safety



Siedentopf design trinocular observation tube adjustable upwards & downwards (Eyepoint height adjustment)



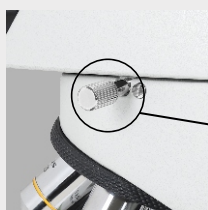
Angled arm enables comfortable carrying



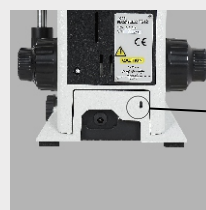
30 degree inclined Trinocular head with Fixed Light Path (70:30)



Fine & Coarse focusing knobs on both sides



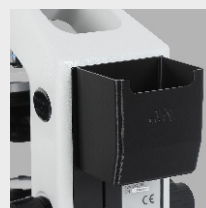
Locking pin for easy trinocular rotation



Built in Anti-Theft security lock slot (Security cable optionally available)



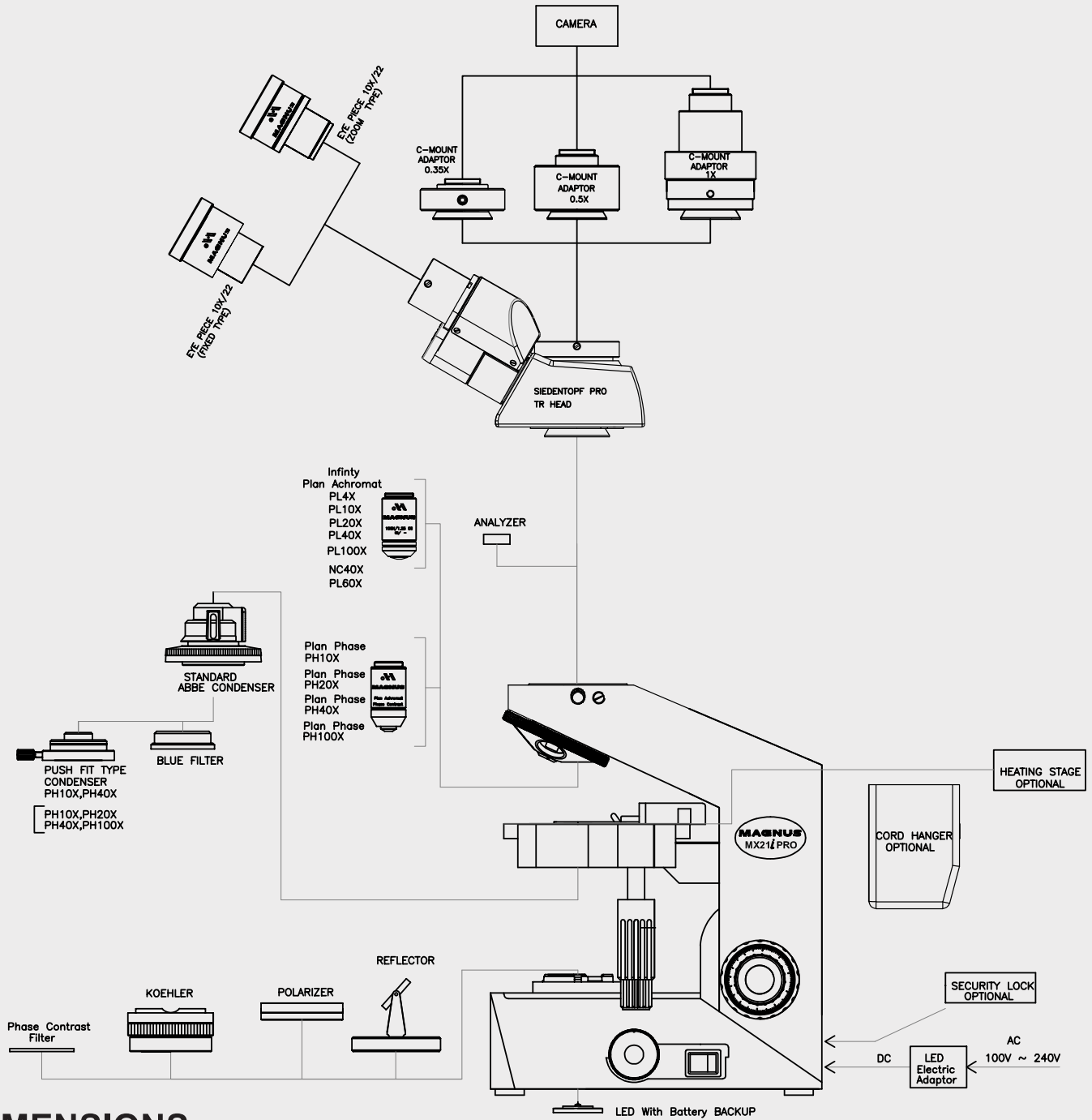
12V Adapter (Standard)



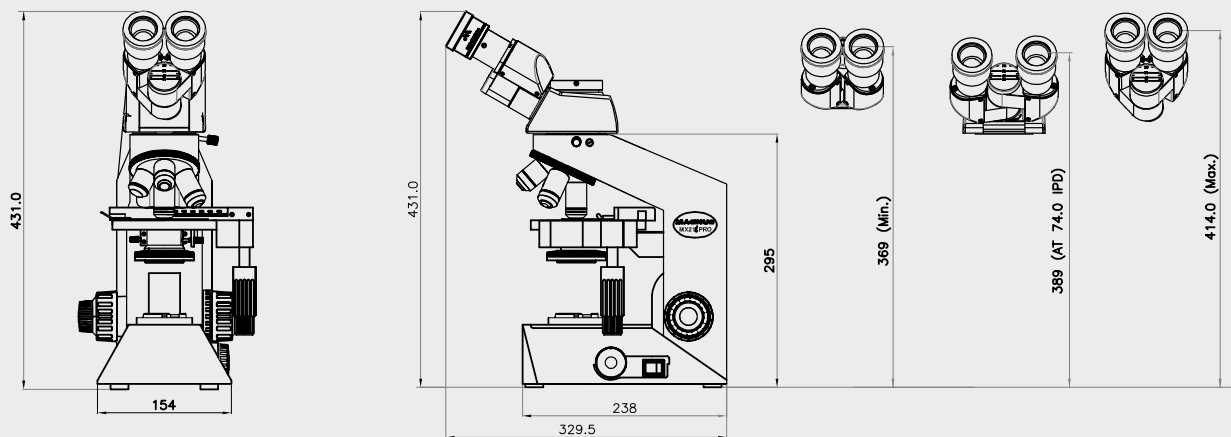
Cord Hanger / Basket Optional

# SYSTEM DIAGRAM

Find us on



## DIMENSIONS



ALL DIMENSIONS ARE IN MM

# Specifications

OPTICAL SYSTEM	UIS2 Infinity corrected plan optics																				
BODY	Aluminium die- cast body with all critical movements based on ball bearing and wire guides thereby ensuring smooth and precise manipulation available in <a href="#">Premium Blue Soft feel</a> or <a href="#">Premium Feather Purple Soft feel</a> and Mistral Standard Color																				
MECHANICAL STAGE	Co-axial low drive mechanical rackless stage 120 mm x 132 mm with traverse area of 76 mm x 30 mm with single slide holder, Stage Side Flap for safety																				
FOCUSING SYSTEM	Co-axial coarse and fine controls with a focus adjustment and fine adjustment knobs Coarse Focus range 20mm. Fine focus rotation 0.25mm																				
CONDENSER HOLDER	Rack and pinion mounted condenser holder																				
CONDENSER	Pre-centered abbe condenser with aperture iris diaphragm (N.A. 1.25) focusable with rack & pinion with Marking 4x,10x,20x, 40x,100x and a continuously variable iris diaphragm																				
POWER SUPPLY	3W LED light source with Li-ion rechargeable battery back-up of approx. 50,000 hrs. Auto off features (Eco Friendly) gets activated after 10 minutes when intensity controller is not touched. It also has RGB Indicator <b>RED:</b> Indicating When Charging <b>GREEN:</b> Indicating Running on Battery <b>BLUE:</b> Indicating 15% Battery left, need to charge the Microscope																				
NOSEPIECE	Quintuple revolving nosepiece based on precision ball-bearing mechanism with positive click stop																				
OBJECTIVES	<table border="1"> <thead> <tr> <th>Plan Achromat Objectives</th> <th>N.A.</th> <th>W.D.</th> </tr> </thead> <tbody> <tr> <td>4x</td> <td>0.10</td> <td>18.5mm</td> </tr> <tr> <td>10x</td> <td>0.25</td> <td>18.5mm</td> </tr> <tr> <td>20x</td> <td>0.45</td> <td>1.67mm</td> </tr> <tr> <td>40x (spring loaded)</td> <td>0.65</td> <td>0.6mm</td> </tr> <tr> <td>100x (oil, spring loaded)</td> <td>1.25</td> <td>0.13mm</td> </tr> </tbody> </table>			Plan Achromat Objectives	N.A.	W.D.	4x	0.10	18.5mm	10x	0.25	18.5mm	20x	0.45	1.67mm	40x (spring loaded)	0.65	0.6mm	100x (oil, spring loaded)	1.25	0.13mm
Plan Achromat Objectives	N.A.	W.D.																			
4x	0.10	18.5mm																			
10x	0.25	18.5mm																			
20x	0.45	1.67mm																			
40x (spring loaded)	0.65	0.6mm																			
100x (oil, spring loaded)	1.25	0.13mm																			
INCLINED OBSERVATION HEAD	Siedentopf design trinocular observation tube adjustable upwards & downwards (eyepoint height adjustment) inclined at 30 degree with fixed light path, 360 degree rotatable. Interpupillary distance 48-75mm. Facility of locking mechanism to prevent observation tube from falling off																				
EYEPIECE	WH 10x (FN 22mm) paired eyepiece with eyeguards. One Eyepiece with Diopter adjustment & One fixed type. The unique optical design provides relief from eye fatigue and renders wide-field images of utmost clarity. Compatible with optionally available eyepiece micrometer																				

## Optional Accessories:

- (a) Phase Contrast attachment push fit type, Darkfield attachment, EPILED, Kohler attachment, Polarizing attachment.  
 (b) WH15X paired Eyepiece, Wooden Cabinet  
 (c) MagCam DC Series & HD Series



LED Fluorescence Attachment



Eyepiece WF15x



Compatible Phase Contrast Attachment



MagCam DC Series



ISO 9001 : 2015  
Certified Company

## MAGNUS OPTO SYSTEMS INDIA PVT.LTD.

Works: A-3, Sector-81, Phase II, Noida-201305, Uttar Pradesh, India  
 Corporate Office: A-5, Mohan Co-operative Indl Estate, Mathura Road, New Delhi - 110044 India  
 Tel: +91 9717710061 Email : info@magnusopto.com Website: www.magnusopto.com



ISO 13485:2016  
Certified Company